

QP-300

Thermal Receipt Printer

Instruction Manual

LAN Installation



Please save the user manual for future reference

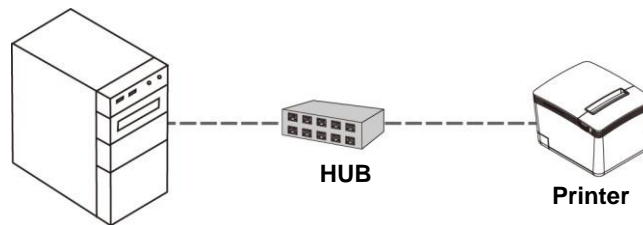
Installing your Printer to the LAN

Note: Connect to the LAN:

Make sure the Printer and HOST PC are properly connected to the HUB.

(The default IP address of the Printer is 192.168.123.100)

Note:



Printing on the TCP/IP Port is only possible if both IP Address (Printer and Computer) belongs to the same class.

Install the Driver of the Printer

Before installing the driver of your printer, make sure the printer is properly connected.

To install the driver of the printer:

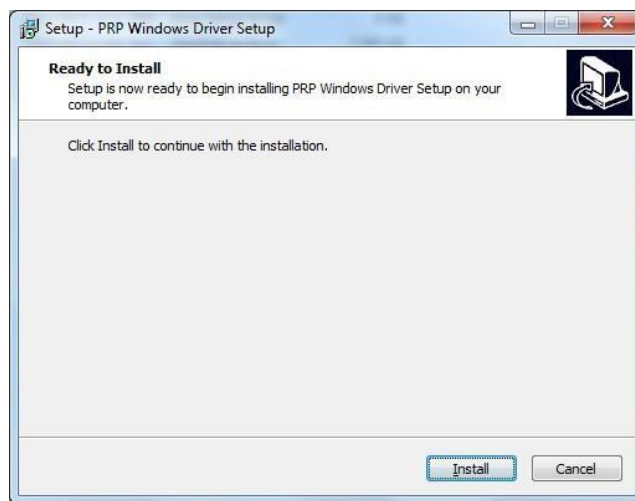
1. Please download the driver from the link below.

[QP-300](#)

2. Double click the icon "SetupPRP.EXE" to initiate the installation.

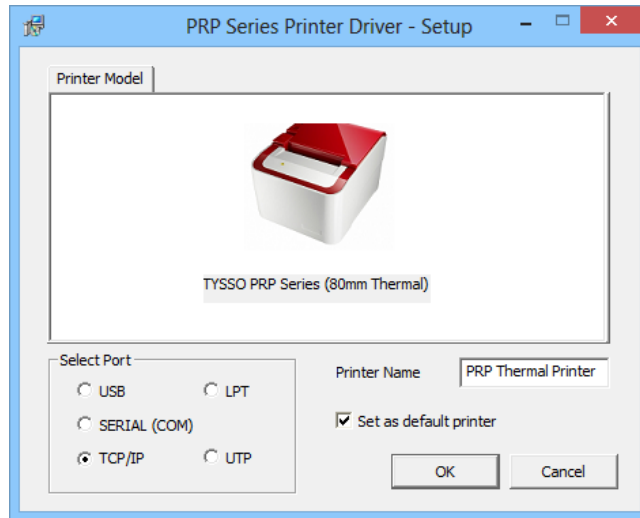


3. Click "Install" to continue.



For Ethernet (TCP/IP) Interface:

Select and assign a TCP/IP port for your printer. Click “OK” to continue.



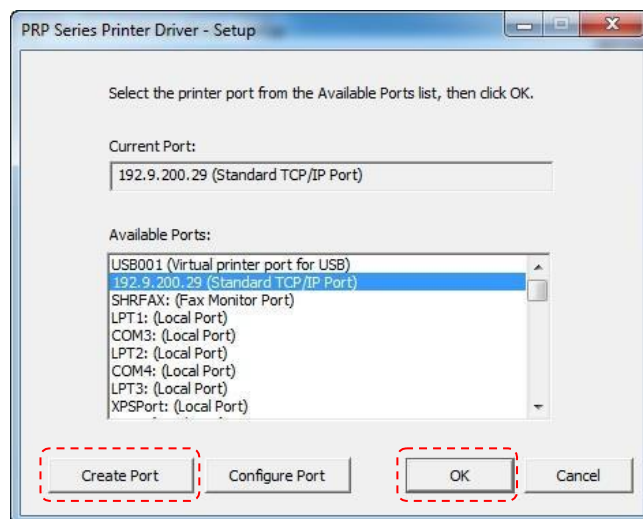
Note:

Printer name you can rename to QP-300

You can set the printer as Default printer

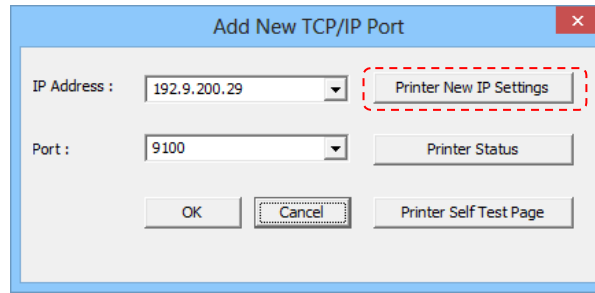
Create a New TCP/IP Port:

If TCP/IP port doesn't exist in the list, click “Create Port” button for further installation.



Add New TCP/IP Port:

Check the printer paper with the DHCP IP address which comes out of printer.
If IP address on paper is same then Click "OK" to continue.

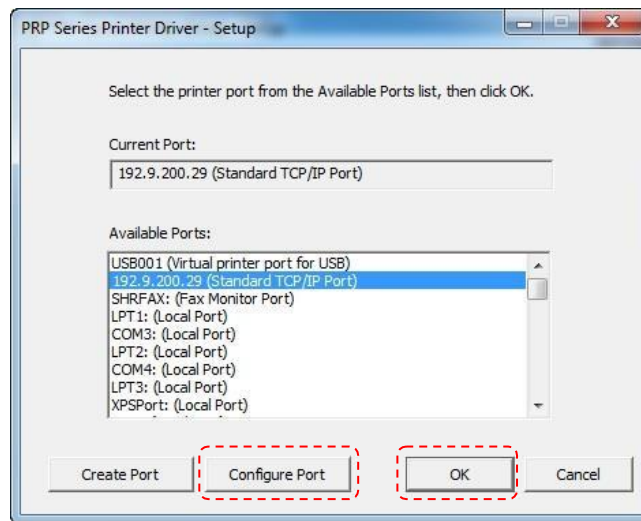


Note:

You can click **Printer Self Test** page to test if a testpage is printed.

Select IP Address

Move the cursor to the Available Port (IP address).Click "OK" to continue.

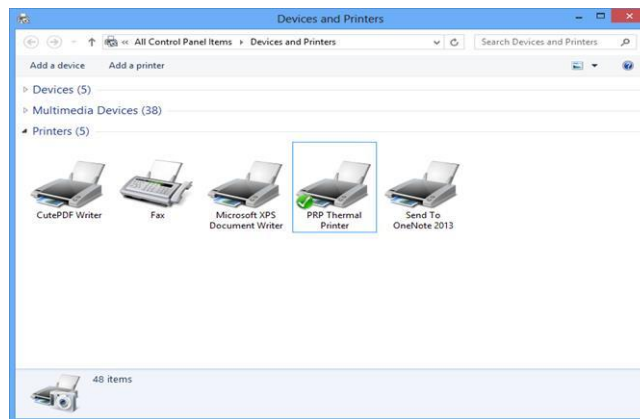


Installation completed

The driver is successfully installed. Click "Finish" to exit the menu.



Examine the Printer



Now user can access to the "Devices and Printers" and examine the new printer