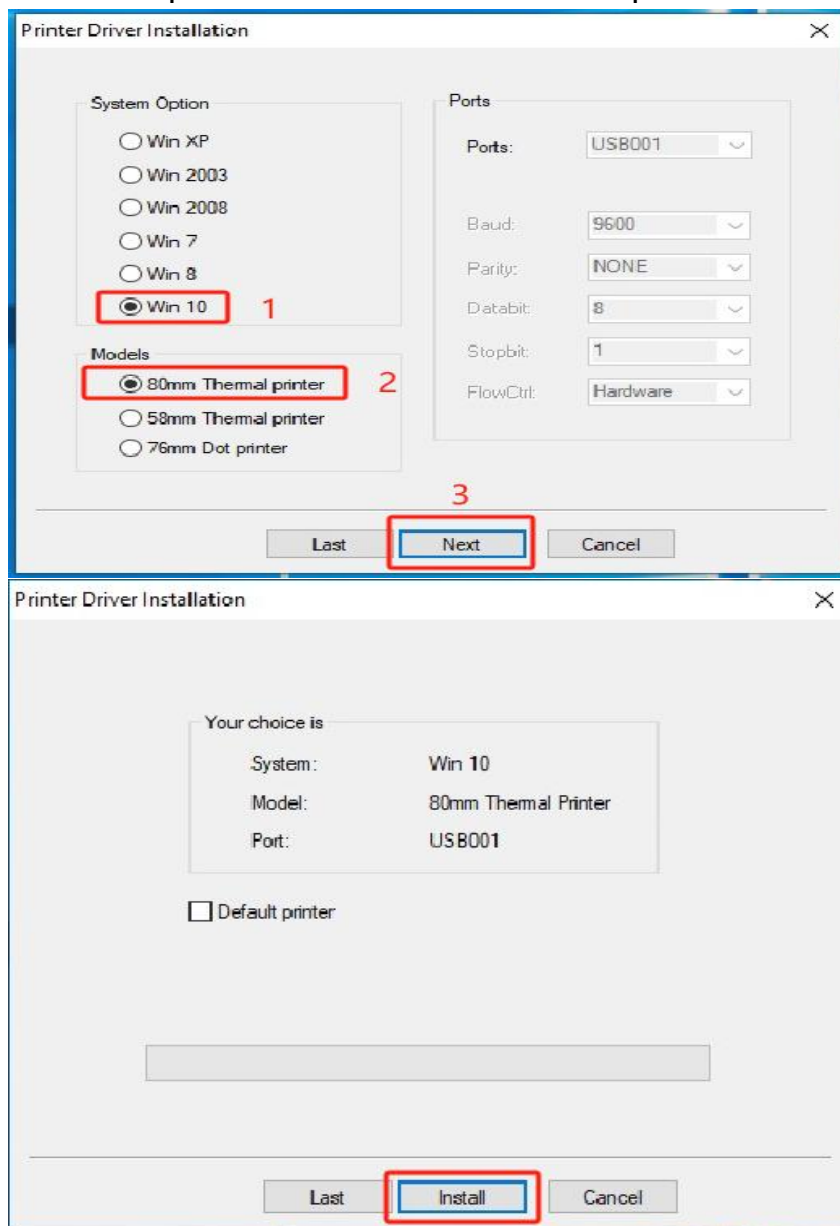


Guide for Setting USB virtual COM with Kiosk printer

The receipt printer on S30 is an 80mm thermal printer with USB port, which can work with the installed driver to use USB port. However, for some POS application which uses only COM communication, a virtual COM utility, *TMVirtualPortDriver*, could be installed to use the USB printer in COM communication by the steps below:

Step 1:

Install the printer driver, as shown in the picture below:

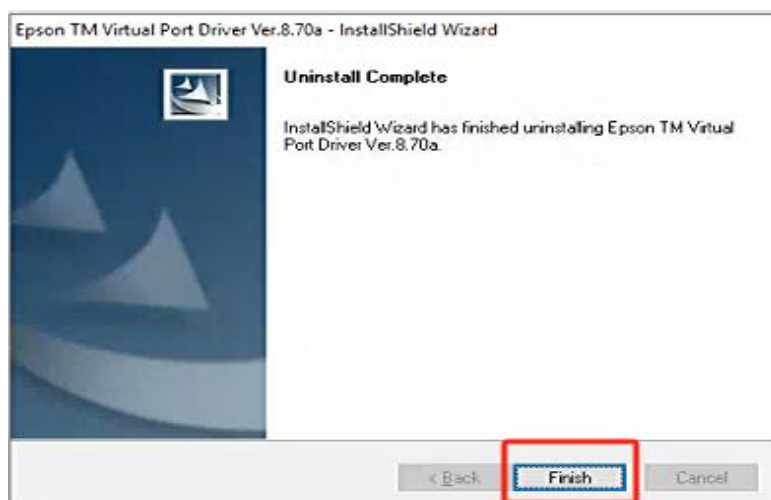
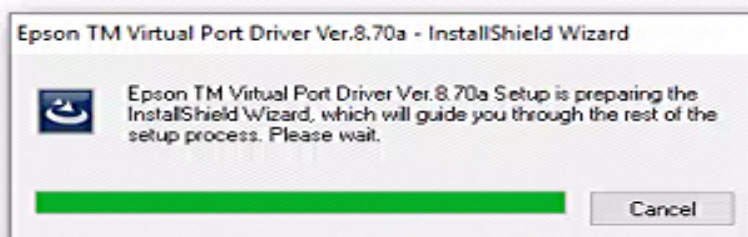
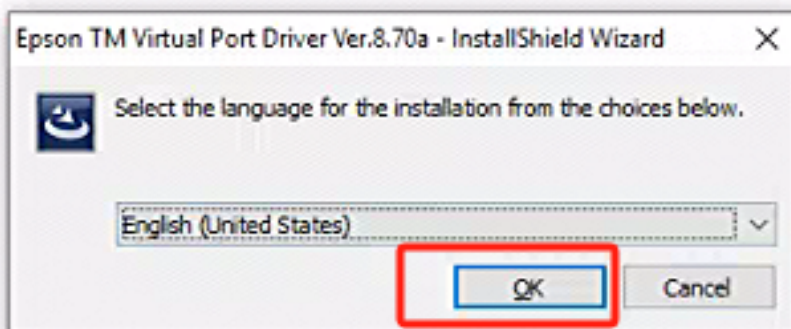


Try the Print Test page with printer driver, to make sure the driver has been successfully installed.

Step 2:

Install the virtual COM utility *TMVirtualPortDriver*, by the steps below:

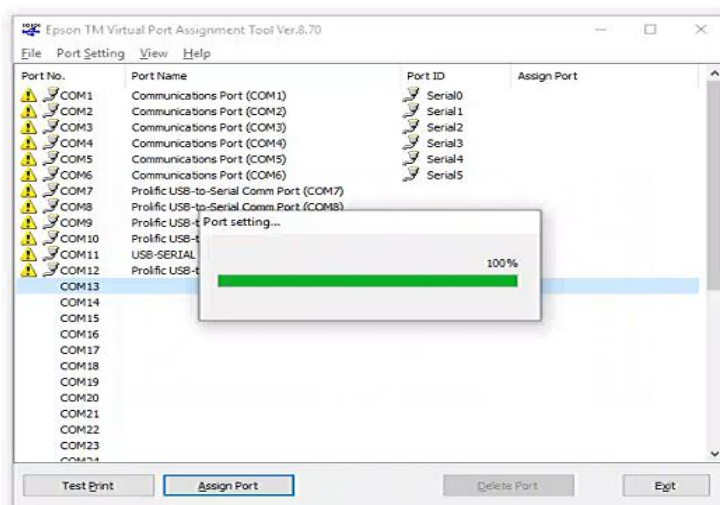
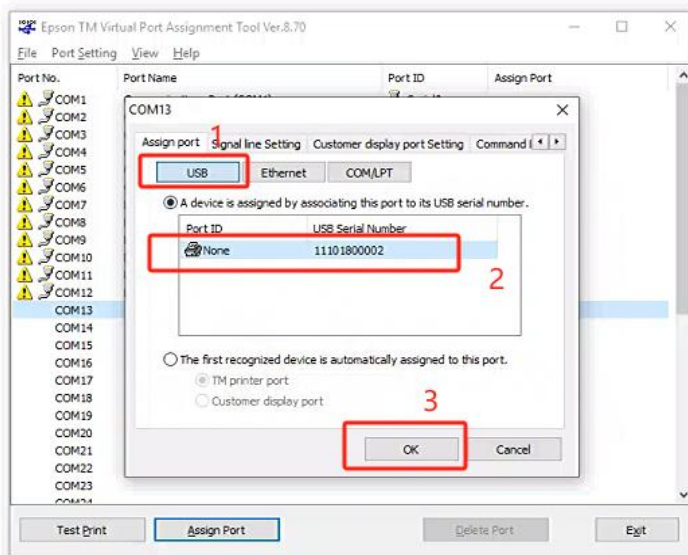
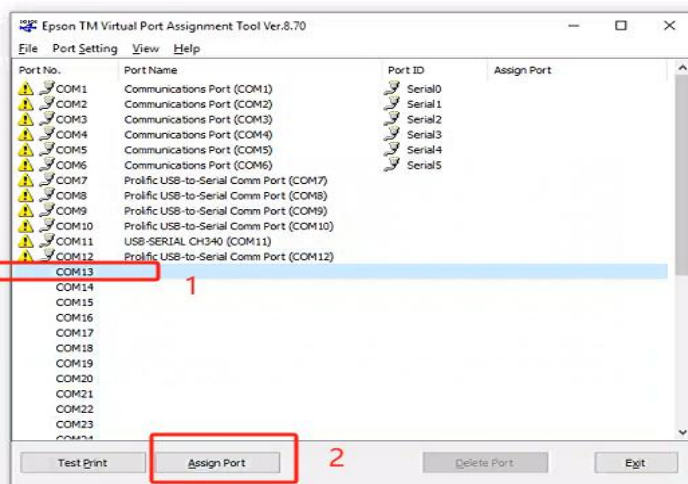
TMVirtualPortDriver870a

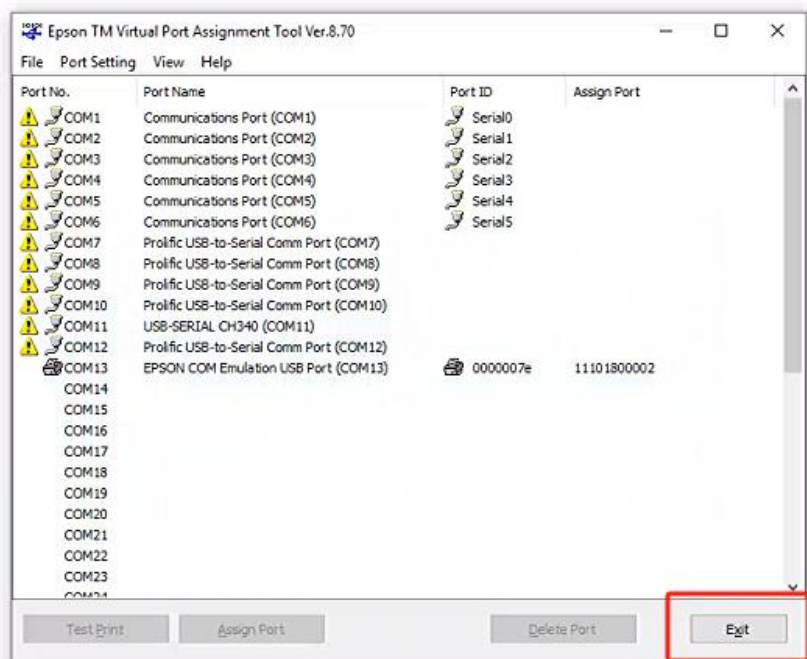


Step3:

After the installation is complete, it will prompt the following window. Select any vacant

COM, for example COM 13, and then follow the operations as shown below:





In Device manager, you will find the COM13 that has just been set, which is the communication port for printer. Next set the printer port to COM13 in the POS application and then you will have the printing communication.

